

## Chesterfield County Residence

FREDERICK HYLAND, AIA: Architect

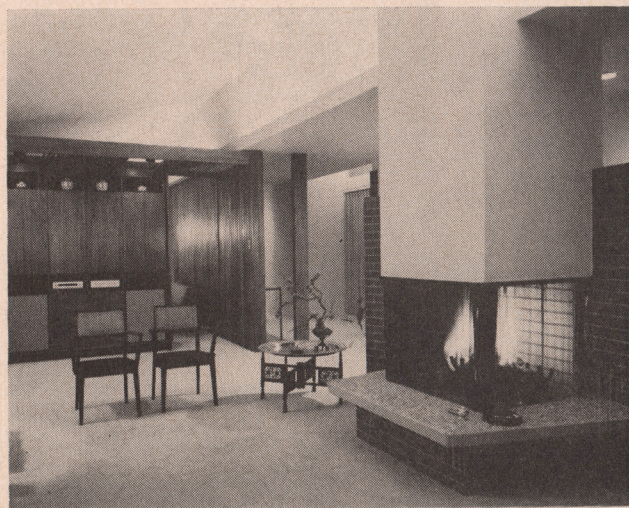
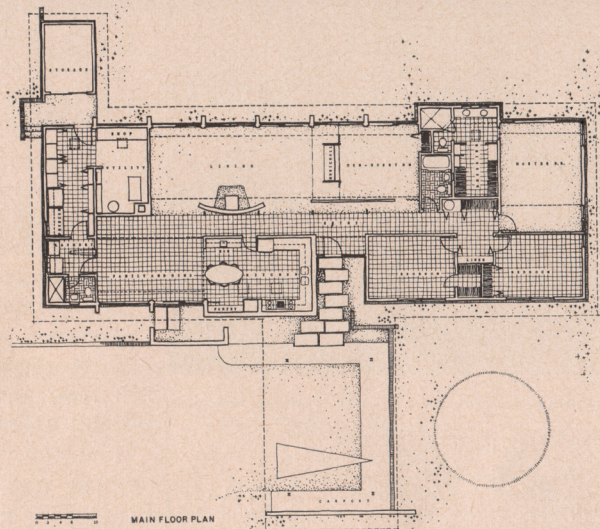
• The E. W. Hakala residence on Croatan Road, Huguenot Farms, Chesterfield County, is a one-floor plan house situated on a gently sloping lot overlooking Lake Cherokee. All main rooms are oriented toward the lake.

The owner desired large open areas for living and family activities with very easy access to kitchen facilities. Sit-down dining can be accomplished at the bar oval table or on a "harvest" dining table in the family room or it can be set up in the north end of the living area.

The 45-foot long living area is subdivided by a music-storage wall to form a den-guest room. Folding walnut doors complete the closure for privacy. The music wall is custom designed by the architect and includes a modern stereo-hi-fi music system with pull-out racks for record storage. The rear of the music wall is book shelving accessible from the den.

To provide for an efficient kitchen with privacy from the entrance, plastic sky-domes were used for natural lighting. These are highly successful and make for a bright daylighted kitchen. Sky-domes are used also in master bath and dressing room, storage and utility room.

Since the house has no basement, attic or barn which can be used for storage, special care was taken to provide adequate, organized storage within the house at the location where needed. Adjoining the laundry room is a large room lined on both sides with floor-to-ceiling adjustable shelves of proper depth and hung with bi-fold metal doors for a neat appearance. A separate storage room is placed to provide privacy for the living room and terrace, and houses lawn mowers, bicycles, garden tools. The carport which features the front elevation holds three cars—one a compact.



### O. E. ZIEBE General Contractor

General contractor was O. E. Ziebe, Richmond, with the following Richmond subcontractors and material suppliers:

W. M. Walder, Jr., masonry contractor; R. Willison Roofing Co., roofing; Smith Door & Window Specialties, windows—Pella casement; H. Beckstoffer's Sons, millwork; Sash Door and Glass Corp., glazing, aluminum sliding doors; Harris Painting Contractors, painting; L. L. Worrell, ceramic and resilient tile; Pleasants Hardware, finish hardware; Atlantic Electrical Supply Corp., lighting fixtures; J. L. Parker, electrical work; Garland Cole, plumbing; R. E. Orcutt Co., heating, air conditioning; Colonial Fixture Co., custom cabinet work; Burke-Hoggard, Inc., St. Charles kitchen cabinets.

